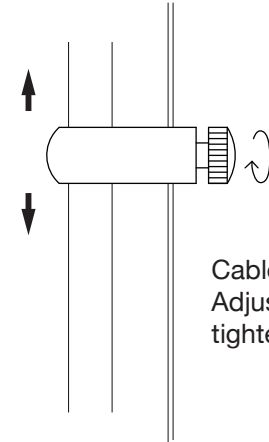
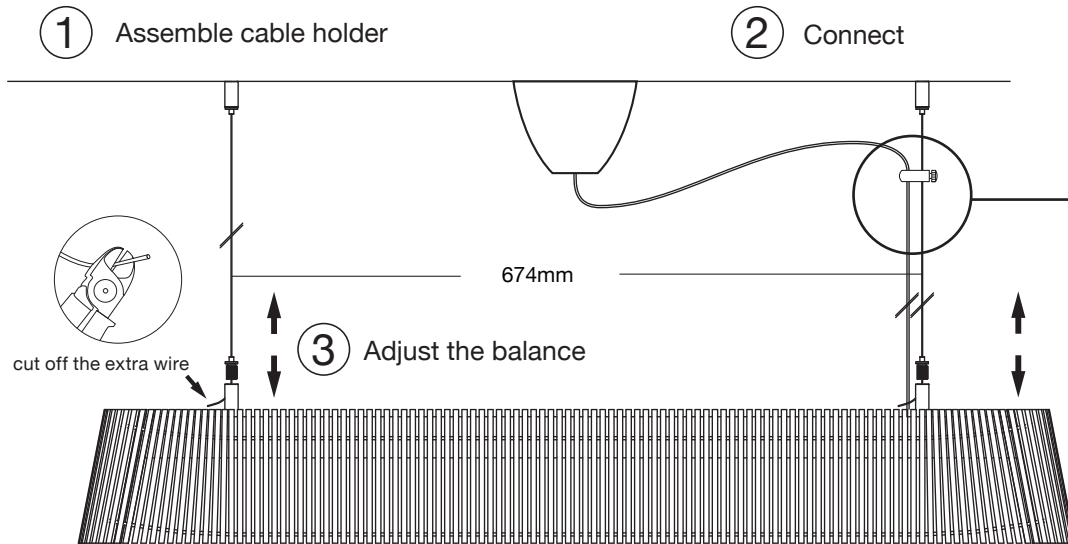
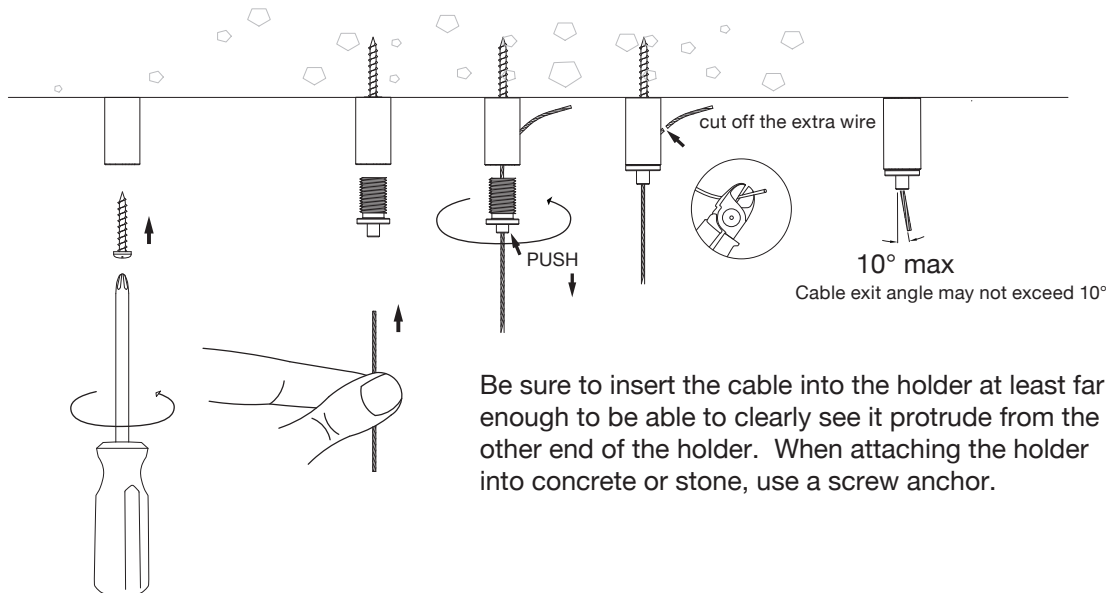


Assembly instructions | Owalo 7000 pendant light

Secto
DESIGN[®]



Cable straightener:
Adjust position and
tighten the screw.



built-in step dimming + trailing edge compatibility



The cable or light source can only be replaced by the manufacturer or an authorized service agent

Secto Design Oy
Kauppalantie 12, 02700 Kauniainen, Finland
tel. +358 9 5050 598
info@sectodesign.fi
www.sectodesign.fi